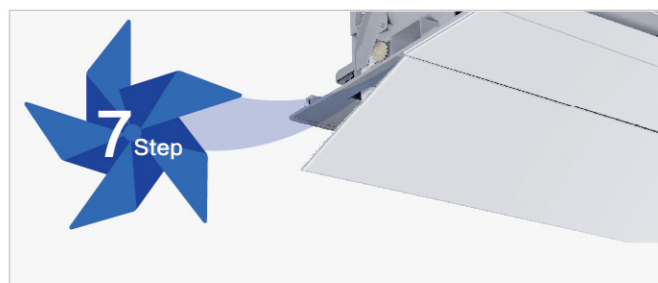




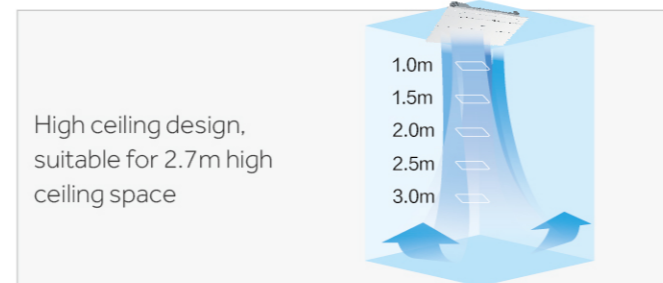
## 1-way Cassette

## 2-way Cassette

New butterfly wing air supply, 5 step fan speed is optional, enjoy healthy air

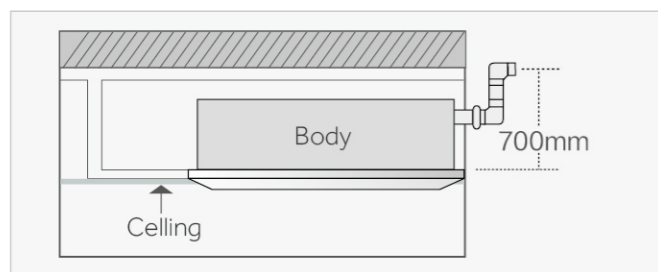


High ceiling design the air reaches the ground



Standard condensate water lifting pump

Equipped with 700mm drain pump, built-in float switch, convenient according to the actual working situation, Discharge condensate water from air conditioner.



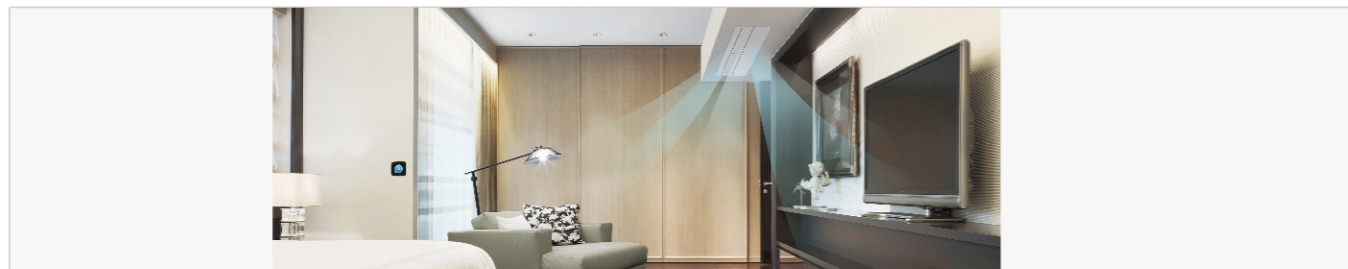
Super wide angle air supply comfortable enjoy

Adopt new DC motor, equipped with up and down, left and right swing wind motor, realize intelligent swing wind control and ultra wide Angle air supply range, enjoy comfortable air.



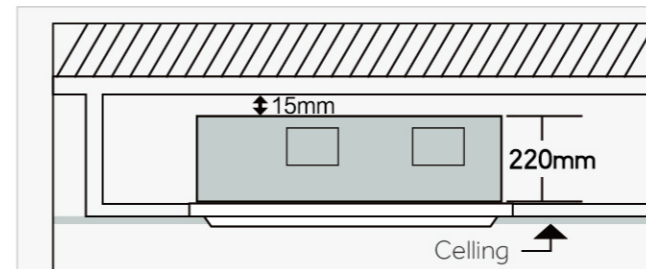
Suitable for corner installation for comfortable and uniform air supply

Compact design, full use of corner space installation, such as small meeting rooms, corridor etc.; The indoor machine is located in the ceiling, and the panel adopts the integrated design, which is generous and beautiful. Suitable for long and narrow rooms, to ensure the uniform distribution of air flow and room temperature.



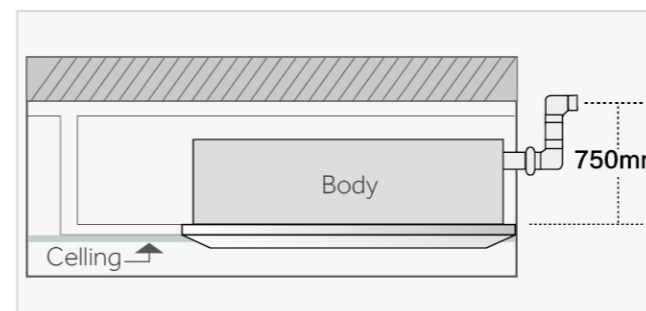
Thin and light design for easy installation

Height is only 220mm, reduce the limitations of installation space. Light weight design to improve installation convenience.



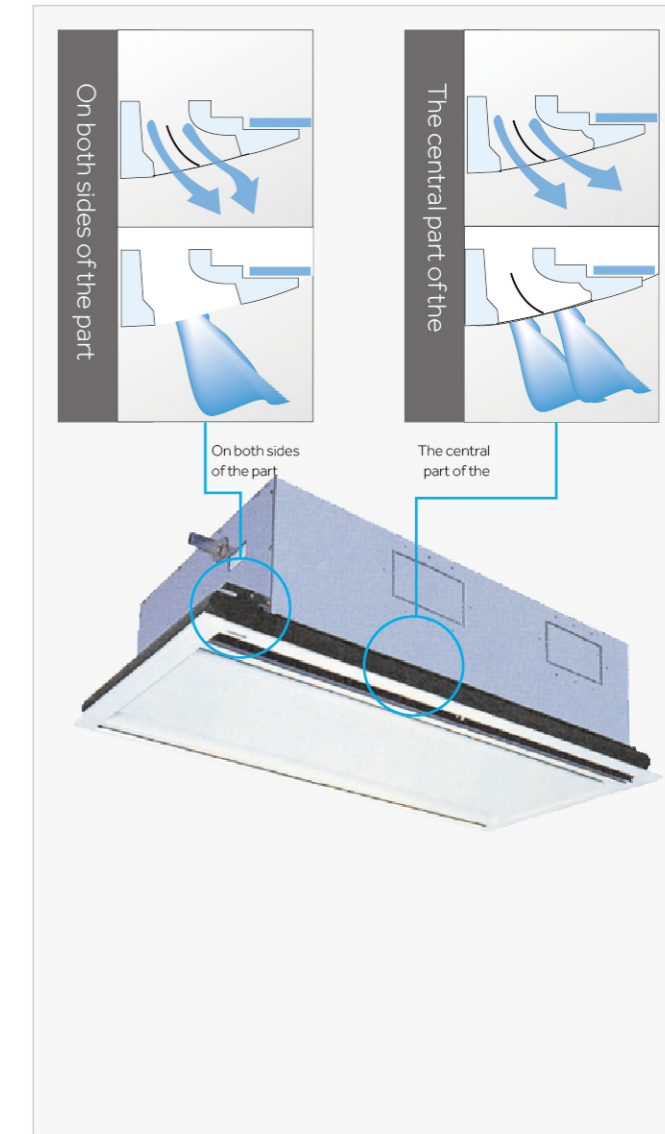
The drain pump lift is 750mm

Adopt high lift and large volume discharge pump, the lift can up to 750mm (from the ceiling).



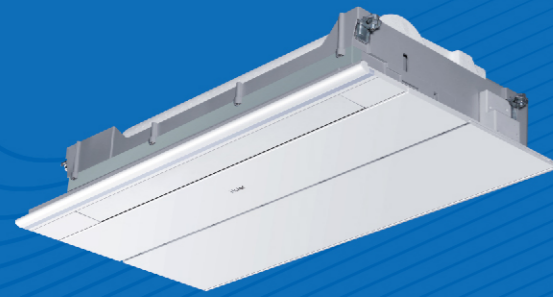
Anti-fouling ceiling design

Unique antifouling and antifogging airflow design, no flocking guide plate, reduce dirt on the ceiling.





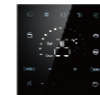
# 1-way CASSETTE



HW-BA116ABK



YR-E17A



HW-BA101ABT



YR-E16B



YR-HRS01

# 1-way CASSETTE

Model/Indoor unit			AB052MAERA	AB072MAERA	AB092MAERA	AB122MAERA
Capacity	Cooling	kBtu/h	5.1	7.5	9.6	12.3
		kW	1.5	2.2	2.8	3.6
	Heating	kBtu/h	5.8	8.5	10.9	13.6
		kW	1.7	2.5	3.2	4
Electrical Parameters	Power supply	Ph/V/Hz	1/220-230/50/60	1/220-230/50/60	1/220-230/50/60	1/220-230/50/60
	Air flow (H/M/L)	m³/h	530/490/450	530/490/450	530/490/450	550/530/490
Performance	Sound pressure level(H/M/L)	dB(A)	32/29/24	32/29/24	32/29/24	34/30/25
	Sound power level(H/M/L)	dB(A)	46/43/38	46/43/38	46/43/38	48/44/39
	Installation	External dimensions(W/D/H)	mm	875/505/185	875/505/185	875/505/185
Shipping dimensions(W/D/H)		mm	1028/581/270	1028/581/270	1028/581/270	1028/581/270
Net/Shipping weight		kg	15.3/17.9	15.3/17.9	15.3/17.9	15.3/17.9
Refrigerant liquid pipe		mm	6.35	6.35	6.35	6.35
Panel	Refrigerant gas pipe	mm	9.52	9.52	9.52	12.7
	Model Name		P1B-1050IB	P1B-1050IB	P1B-1050IB	P1B-1050IB
	External dimensions(W/D/H)	mm	1050/560/122	1050/560/122	1050/560/122	1050/560/122
	Shipping dimensions(W/D/H)	mm	1133/623/197	1133/623/197	1133/623/197	1133/623/197
	Net/Shipping weight	kg	5.3/8.3	5.3/8.3	5.3/8.3	5.3/8.3
Controller	Wired(Optional)	/	HW-BA101ABT	HW-BA101ABT	HW-BA101ABT	HW-BA101ABT
		/	YR-E16B	YR-E16B	YR-E16B	YR-E16B
		/	HW-BA116ABK	HW-BA116ABK	HW-BA116ABK	HW-BA116ABK
		/	YR-E17A	YR-E17A	YR-E17A	YR-E17A
	Infrared (Optional)	/	YR-HRS01	YR-HRS01	YR-HRS01	YR-HRS01



DC fan motor



Ultra thin design 185mm



Butterfly wings airflow



Built-in high head drain pump max. 1000mm